

 **CIRCA**
THEATRE

2021

JAN-APR



circa.co.nz

CIRCA THEATRE JANUARY-APRIL 2021 SEASON

Kia ora and welcome to Circa Theatre's **January-April 2021 Season**. Instead of our traditional annual programme we will be presenting three separate and special 2021 seasons: January-April; May-August and September-December. Keep an eye out for more brochures in 2021 and visit www.circa.co.nz for the latest news and updates.

Again, we are proud to present a smorgasbord of vibrant, diverse and exciting theatre of the highest professional standard in our 45th year and we hope you enjoy what we have in store for you in the first four months of 2021.

Ngā mihi, The Circa Council

CINDERELLA THE PANTOMIME RETURNS!

By Simon Leary and Gavin Rutherford

Directed by Susan Wilson

Music arranged and directed by

Michael Nicholas Williams

2-16 Jan | Tues-Sat 6.30pm | Sun 4pm

Circa One | \$18-\$52 | Family Pass \$122

BY ARRANGEMENT WITH
PLAYMARKET
AGENT, ADVISOR, BOOKSHOP



Shoreline
PARTNERS



A new pair of shoes really *can* change your life!

If you missed out on our recent Panto season we offer you the chance to come along for our short return season in January. Celebrate the new year with this fabulous family comedy, jam-packed with singing, dancing, up-to-the-minute jokes for the adults, and a sizeable dose of magic and slapstick for the kids.

THE LOOK OF LOVE

Musical arranger: Tom Rainey

Resident musical director: Tom McLeod

Starring: Ali Harper with Tom McLeod

and Callum Allardice

Ali-Cat Productions Ltd

23 Jan-20 Feb | Preview 22 Jan

Tues-Thurs 6.30pm | Fri-Sat 8pm | Sun 4pm

Circa One | \$25-\$52

A musical feast for the heart and soul

Ali Harper is back and this time showcasing the extensive hit songs of the one and only Burt Bacharach in ***The Look of Love***. Bacharach's music has a sound like no other... poignant, atmospheric, beautiful. Get ready to be wowed by the Grammy award winner's extensive collection – *Close To You*, *That's What Friends Are For*, *Anyone Who Had A Heart*, *I Say A Little Prayer*, *What's New Pussycat* reminding us today more than ever of *What The World Needs Now*!

'Ali Harper lights up every room she enters, owns every stage she steps upon, steals every heart that hears her sing.' – Alex Rybeck, New York

'Harper transcends the "star" label to prove herself a true artist.' – John Smythe, Theatreview



© Rose Miller, Stephen A'Court Photography



© Canterbury Tales Photography



© Kasia Bogulevski

A FLOOR, SOME THOUGHTS, AND US

Choreographer: Jeremy Beck

Company: ChoreoCo by Footnote

New Zealand Dance

25–28 Feb | Thurs–Sat 7.30pm | Sun 4pm

Circa One | \$18–\$25

Part of the New Zealand Fringe Festival 2021

Essential escapism from the everyday

With its trademark exploratory energy, this year's ChoreoCo show, *A Floor, Some Thoughts, and Us*, will provide essential escapism from the everyday. A regular feature on the New Zealand Fringe Festival calendar, ChoreoCo is Footnote's short-term company of exciting dance artists. Devised by dynamic choreographer Jeremy Beck, at the heart of *A Floor, Some Thoughts, and Us* lies a curiosity about the nature of creativity. Use these 50 minutes to forget about the daily grind and get pulled into something new.

PLAY READINGS

Part of the New Zealand Fringe Festival 2021



© Ben Wilson

HOMEMADE TAKEAWAYS

Written by Ben Wilson

Directed by Cassandra Tse

Sat 6 Mar, 2pm

Circa Two | \$10 (Fringe addict)/\$15/\$19

BY ARRANGEMENT WITH
PLAYMARKET.
AGENT. ADVISOR. BOOKSHOP

A Dunedin-based drummer suddenly uproots his job and city; a recently dumped self-help expert is self-

destructing; a primary school teacher wants to write violent children's fiction; and a thirty-one year old, skateboarding, Emma Thompson obsessed man-child is sleeping on the couch. A comedy-drama set in small-town New Zealand.



© Image: Xoe Hall

THE LEE LETTER

Written by Claire Robinson

Directed by Ross Jolly

Sat 13 Mar, 2pm

Circa Two | \$10 (Fringe addict)/\$15/\$19

It will come as a surprise to many today, that Michael Joseph (Joe) Savage, the Labour Party's first 'rockstar' leader, was likely also New Zealand's first closeted gay Prime Minister. Set during the turbulent 1935–40 period, *The Lee Letter* explores the deadly power struggle between an increasingly unstable and medication-reliant Savage and his 'frenemy', popular socialist MP John A (Jack) Lee. Once sharing a radical utopian vision for New Zealand, both men eventually destroyed each other's political careers before either could realise that vision.



12TH ROUND

Presented by Tales from the Kava Bowl

Written by Suli Moa (2016 Adam NZ Play Award, Best Play by a Pasifika Playwright)

Directed by Shimpal Lelisi

11-20 Mar

Tues-Thurs 6.30pm | Fri-Sat 8pm | Sun 4pm

Tue 16 Mar, 1pm – School Matinee | Sat 20 Mar, 2pm show only

Circa One | \$25-\$52

“Everybody has a plan until they get punched in the face”

– Mike Tyson

Kiti is a young boxer on the rise to becoming New Zealand's first international heavyweight champion. He has one more fight to showcase and thank his loyal supporters and the fans of NZ before embarking on a training opportunity in the US.

Directed by award-winning Shimpal Lelisi (*Naked Samoans, BroTown, Sione's Wedding*), starring award-winning actor David Fane (*Naked Samoans, BroTown, Sione's Wedding*), Amelia Reid-Meredith (*Shortland Street*), Shadon Meredith (*The Arrival – Red leap*) and Theo David (*Shakespeare's Pop-up Globe*).

12th Round is written by award-winning playwright Suli Moa (2013 CNZ Pasifika Emerging Artist, 2016 & 2018 Adam NZ Play Award recipient, Best Play by a Pasifika Playwright).



YES YES YES

Created by Eleanor Bishop
& Karin McCracken

23-26 Mar – High school shows

Please email circa@circa.co.nz

26 & 27 Mar, 6.30pm – Public shows

Circa Two | \$15-\$30

Powerful theatre about sex, consent, and healthy relationships

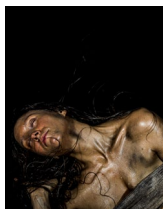
Jamie and Ari like each other. Karin and Tom do too. They might be at two separate parties, but their stories are identical – until they really aren't. Part confession, part documentary, part open conversation, **Yes Yes Yes** is a theatre show created for young people that explores the knotty and necessary topics of healthy relationships, consent, and desire. This latest work from award-winning duo Karin McCracken and Eleanor Bishop blends audience interaction with captivating solo performance and features in-depth interviews with teenagers from around Aotearoa New Zealand.

Outstanding Performance, Karin McCracken, Wellington Theatre Awards 2019. Excellence in Theatre for Social Change. Wellington Theatre Awards 2019. Excellence for Overall Production, Auckland Theatre Awards 2019.

Suitable for ages 14+. Warning: this show discusses sexual violence.

“My 14-year-old son and I went – the show was a catalyst for conversations we'd never had. This is a really, really good show for anyone with teenagers and wannabe nearly teenagers.” – Parent

Originally commissioned by Auckland Live and produced by Zanetti Productions.
Development support provided by Creative NZ & Rape Prevention Education.



STRASBOURG 1518

Company: Borderline Arts Ensemble

Director and choreographer:

Lucy Marinkovich

Writer and composer: Lucien Johnson

23-28 Mar

Tues-Thurs 6.30pm | Fri-Sat 8pm | Sun 4pm

Circa One | \$25-\$52

Please Note: Contains nudity and loud music

“Strasbourg 1815 seizes your imagination and emotions with an uncompromising grasp” – Leah Maclean, Regional News

Strasbourg 1518. A city on the brink. The triple threat of escalating inequality, rampant misogyny and a devastating drought threaten to break the town in two. When a lone woman steps out of her house and begins to dance, everyone is bewildered. But within days, hundreds more have followed her lead. As the authorities invent ever more bizarre ways to resolve this new crisis, the city falls one by one into a delirious hypnosis of a real-life dance with death.

“Strasbourg 1518 is as chilling and wild, and as beautiful, as you want dance in the theatre to be.” – Dance Aotearoa New Zealand/Michelle Potter ‘On Dancing’, Jennifer Shennan.

Strasbourg 1518 was produced by Borderline Arts Ensemble with the support of the New Zealand Festival, Creative New Zealand, Wellington City Council, Wallace Arts Trust, Wellesley Studios, Wellington Community Trust, the Australian High Commission, and the Theatre Artists Charitable Trust. *Strasbourg 1518* was commissioned by the New Zealand Festival and premiered in March 2020, returning to Circa Theatre and the Auckland Arts Festival in 2021.



THE ARTIST

By Circo Aereo & Thom Monckton

Directed by Sanna Silvennoinen

Presented by A Mulled Whine

31 Mar-10 Apr | \$30 Preview – Tues 30 March

Tue-Sat 6.30pm | Fri-Sat 8pm | Sun 4pm

Circa One | \$25-\$52

Early Bird tickets available

“Thomas Monckton is a comic genius” – Dominion Post (NZ)

Comedy and circus sensation Thom Monckton will astound you in **The Artist**: an incredible feat of physical strength, skilled theatrics, and comedic storytelling. To be in the audience of a Thom Monckton performance is spellbinding, as he makes a spectacular experience out of the ordinary. An artist arrives at his paint-splattered studio ready to create a new work. He waits for inspiration. Focus strays, the blank canvas terrifies, and the tools have been lost to the bowels of the atelier. **The Artist** is a show combining hilarious clowning and physical theatre about the rough graft of an artist. Another collaboration from the creators of worldwide smash-hit *The Pianist*.

“This world-class performer has accomplished what feels like a full day’s work in his artist’s studio with an ease that belies the years of training that have brought him to this exquisite moment.” – Theatreview (NZ)

“A masterpiece of hilarious chaos” – Scotsman (UK)



Capital E National Theatre for Children presents **SEASONS**

Written by Peter Wilson

Directed by Jacqueline Coats

Music by Laughton Patrick

Lyrics by Jenny Patrick

19-24 Apr | 10am and 1pm shows

Following the 1pm show we will have a 'meet and greet' the puppets and performers.

Circa One | \$10 per person (Under 2s Free)

Bookings at www.capitale.org.nz or 04 913 3740

BY ARRANGEMENT WITH
PLAYMARKET.
AGENT, ADVISOR, BOOKSHOP

Journey into nature's world of living creatures, colours, and sounds

Beautifully crafted, *Seasons* transports children through song, music, and puppetry into the four seasons – raumati, ngahuru, hotoke and kōanga. Capital E is remounting *Seasons*, one of its most popular theatre productions from its 22-year repertoire in memory of Laughton Patrick.

UP DOWN GIRL

Directed by Nathan Mudge and Michiel van Echten

Adapted from *Up Down Boy* by Sue Shields with Myrtle Theatre Company

Company: The Up Down Project

21 Apr-1 May | Preview Tues 20 Apr

Tues-Sat 6.30pm | Sun 4.30pm

Audio Described Performance – Sun 25 April

Relaxed Performance – Tues 27 Apr

Sign Interpreted Performance – Visit circa.co.nz

Circa Two | \$15-\$25

It's time to fly

Mattie is off to college in an hour – and she's left it to Mum to pack her case. Mum won't miss the blaring music, slamming doors and massive phone bills. But Mattie is no ordinary teenager, and will Mum cope without her? *Up Down Girl* is an honest and uplifting play about the extraordinary life of a person with Down syndrome and their mother's humorous perspective on bringing them up.

"Lily Harper steals the limelight" – Stuff

BOOKINGS

Bookings can be made in person at the Box Office, by phone on 04 801 7992 or online anytime at www.circa.co.nz.

Please note that all Visa and Mastercard transactions incur a \$2 contribution towards the standard card fees.

CORPORATE VENUE HIRE

For information about hiring Circa Theatre for your corporate events contact Te Papa Venues at venues@tepapa.govt.nz or call 04 381 7272

EARLY BIRD TICKETS

Book in advance, secure your seats and enjoy our discounted Early Bird tickets deals where you can save \$10 on Adult tickets (\$42) and Concession & Senior tickets (\$32).

Note: Only applies to selected shows and is available for the first two weeks of public sale. Keep up to date at www.circa.co.nz.





CIRCA THEATRE CAFE & BAR

Enjoy our seasonal menu at Wellington's iconic waterfront location. Our outdoor seating is the perfect spot for a cold beverage and a pizza. A cafe by day, transforming to a unique bar and restaurant experience each evening. www.circa.co.nz/cafe-bar.

ACCESSIBILITY AT CIRCA

Circa Theatre prides itself on being a theatre that strives to make excellent quality theatre that is available to all members of our community. We offer a range of different accessible performances to suit audience members with different needs and requirements. Visit circa.co.nz for more information or email access@circa.co.nz.

BECOME A FRIEND OF CIRCA

Annual Membership - \$60

Express your love of the theatre by taking out an annual membership to our Friend of Circa programme. An affordable way to be involved in supporting Circa Theatre, you will receive:

- Two tickets at our special Friends price (\$38 per ticket), for the first two weeks of each production
- Regular newsletters keeping you up-to-date with exclusive content about upcoming productions
- Automatic entry into our Friends of Circa monthly giveaway of TWO Circa Theatre tickets
- Invitations to special events at Circa Theatre.

BECOME A CIRCA THEATRE SUPPORTER

All partners, donors and sponsors play an important role at Circa Theatre and each gift makes a difference. We offer sincere thanks to the generous people who donate. To become a Friend of Circa or to donate

- **Online** Visit circa.co.nz/support
- **Phone** Call our Box Office on 04 801 7992 or email circaadmin@circa.co.nz
- **In person** Visit Circa Theatre, 1 Taranaki Street, Wellington

Circa is an incorporated society also registered under the Charities Act 2005 (registration number CC31347).



In 1987, Circa Theatre established the Theatre Artists Charitable Trust (TACT) to provide financial support to the creative artists (actors, playwrights, directors, etc) and help them achieve a viable income and career as professional artists. The support the artists receive from TACT through founding sponsor Chapman Tripp, Creative New Zealand, and individual donors such as yourself, is vital to ensure we can continue to bring world-class theatre to Wellington. Any donation, big or small, is greatly appreciated. Simply visit circa.co.nz/arty500 to donate by credit or debit card.

Theatre Artists Charitable Trust is a charitable trust registered under the Charitable Trusts Act 1957 (registration number CC28898).

Circa Theatre offers sincere thanks to the generous philanthropists and organisations who make it possible for us to continue to bring world class theatre to Wellington.

PRINCIPAL SPONSORS



CORE FUNDERS



MAJOR PARTNER



MAJOR GRANTS



CIRCA THEATRE

1 Taranaki St, Wellington | 04 801 7992 | www.circa.co.nz



All information in this brochure is correct at time of printing but is subject to change.