



CIRCA  
THEATRE

28 July - 26 August 2023



Taurima Vibes Presents  
The **SUN** and  
**WIND**  
Nā Tainui Tukiwaho

# THEATRE ARTISTS CHARITABLE TRUST

**Circa Theatre** has been operating since 1976 and has gained a reputation as one of New Zealand's liveliest and most innovative theatres.

In 1987, Circa Theatre established the **Theatre Artists Charitable Trust (TACT)** to provide financial support to the creative artists (actors, playwrights, directors, etc) and help them achieve a viable income and career as professional artists. The support the artists receive from TACT through founding sponsor **Chapman Tripp**, as well as **Creative New Zealand**, and **individual donors** such as yourself, is vital to ensure we can continue to bring world-class theatre to Wellington.

## MAKE YOUR DONATION TODAY

Any donation, big or small, is greatly appreciated. Simply visit [circa.co.nz/support](http://circa.co.nz/support) to donate by credit or debit card.

Otherwise, make a payment through Internet Banking.

Account name: Theatre Artists Charitable Trust

Account number: 01-0505-0636362-00

Particulars: [Your name]

Payee code: [Your phone number]

Reference: Donation

Theatre Artists Charitable Trust is a charitable trust registered under the Charitable Trusts Act 1957 (registration number CC28898).

***Thank you for your support***

## PRINCIPAL SPONSORS



**Chapman Tripp** is proud to support New Zealand's vibrant and diverse arts community. Founding sponsor since 1987.



**Creative New Zealand** is the national arts development agency developing, investing in and advocating for the arts.

# CIRCA THEATRE

Circa Theatre staged its first production in April 1976 and in the succeeding years gained a reputation as one of New Zealand's liveliest and most innovative theatres. Circa also pioneered a collaborative system supporting creative artists who are the life-blood of our theatre. They emphasise the qualities of commitment and self-help which we greatly admire and which contribute to bringing our audiences professional theatre which is diverse and of the highest professional standard.

**Circa Theatre is administered by a working council comprising:**

Neville Carson, Debbie Fish, Andrew Foster, Carrie Green, Carolyn Henwood, Ross Jolly, Simon Leary, Salesi Le'ota, Jamie McCaskill, Gavin Rutherford, Linda Wilson, Susan Wilson.

In November 1994 Circa moved to its new premises at 1 Taranaki Street, Wellington, and in 2018 Circa completed its cafe/bar and foyer renovations for all patrons to enjoy.

**Theatre concept and design:** Grant Tilly

---

**Circa Theatre offers sincere thanks to the generous philanthropists and organisations who make it possible for us to continue to bring world class theatre to Wellington.**

---

**CORE FUNDERS**



Absolutely Positively  
Wellington City Council  
Me Heke Ki Pōneke

**MAJOR PARTNER**



**MAJOR GRANTS**



---

**Become a Circa Theatre Supporter**

All supporters play an important role at Circa Theatre and each gift makes a difference. For more information about becoming a Partner, donor or sponsoring a show at Circa Theatre, please contact our Philanthropy and Partnerships Manager at [partnership@circa.co.nz](mailto:partnership@circa.co.nz) or visit [circa.co.nz/support](http://circa.co.nz/support)

---

**Toi Uru Kahikatea (Arts Development) Investment Programme**

Circa Theatre is supported by Creative New Zealand's Toi Uru Kahikatea (Arts Development) Investment Programme. The programme provides annual or multi-year funding (up to three years) to established New Zealand artists, arts practitioners and arts groups and organisations, to support regular or continuous programmes of activity.

# The **SUN** and **WIND**

Nā Tainui Tukiwaho

## **KAIWHAKAARI**

Rangi	<b>Tainui Tukiwaho</b>
Hūkerikeri	<b>Julie Edwards</b>
Hihi	<b>Joe Dekkers-Reihana</b>
Kate	<b>Tuakoi Ohia</b>

## **WHĀNAU**

Kaiwhakahaere	<b>Borni Te Rongopai Tukiwaho</b>
Director	<b>Edward Peni</b>
Set Design	<b>Tainui Tukiwaho</b>
Lighting Design	<b>Katrina Chandra</b>
Sound Design	<b>Eve Gordon</b>
Stage Manager	<b>Edward Peni</b>
Support team	<b>Georgia-May Russ</b>
	<b>Stevie Greeks</b>
Operator	<b>Wren Glover</b>
Publicity	<b>Jean Sergent</b>

Running time: 1 hour 10 mins



**Shoreline**  
P A R T N E R S



**Absolutely Positively**  
**Wellington City Council**

Me Heke Ki Pōneke

## WRITER'S NOTE - TAINUI TUKIWAHO

Nei ra nga mihi ki a koutou i panuitia enei tuhinga. Koutou I whai wa ki te tautoko I a matou kaupapa

I began writing this show as an escape from my children during lock down. In the evenings I gave myself writing challenges and "The Sun and the Wind" was the result.

There were two specific wero I laid down for myself, I gave myself the challenge of making the hostage genre surprising again and I wanted to find an interesting way to use a gun in a show, these are two tropes that I had not seen used in an interesting way in a very long time.

I'm excited to see whether audiences think I have achieved this

The Sun and the Wind is the first drama I have written, the tone and style of the piece is reminiscent of my other more comical/ musical works but the engine of this show lives in a much darker and often hopeless space which was surprising for me.

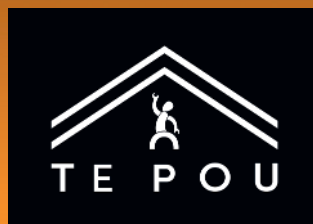
## DIRECTOR'S NOTE - EDWARD PENI

Kia ora. It is wonderful to be in Te Whanganui a Tāra at Circa presenting this gripping new play by Tainui Tukiwaho, a story that explores themes of family, grief, hope and the collisions that can create connections and vice versa. The themes of the Aesop fable of which the play takes it name from, with the gentle heat of persuasion have helped to hold a delicate balance of the story's familial warmth and heart break.

I am indebted to our wonderfully talented, multi-hyphenate cast and crew who have been generous, agile and sensitive with their ideas, whakaaro and presence as we rehearsed over the last weeks, bringing out as much life as possible to fulfill the story's impact. We hope you enjoy the ride.

### Audience Care note:

*This show contains depictions and references to suicide, self harm and death. Please note, there is also the use of a fake gun in the performance, including the sound of gunshots.*



# WHAT'S ON AT CIRCA

## ***Public Service Announcements – Election 2023***

29 Jul–26 Aug | Circa One | \$30 – \$55

By Thom Adams, Jamie McCaskill and  
Johanna Cosgrove

Directed by Gavin Rutherford

Presented by arrangement with Playmarket



*Public Service Announcements* – Aotearoa’s longest running political satire – returns with a brand-new production just in time for the election, bringing together a collection of ferociously talented theatre artists.

## ***I Want To Be Happy***

7–30 Sep | \$30–\$55

By Carl Bland

Starring Jennifer Ludlam

Directed by Ben Crowder & Carl Bland

Script development support provided by Auckland Theatre Company



Binka is a guinea pig in a laboratory cage. Paul is the lab assistant who looks after her. Neither understand each other yet everyday they share their hopes and fears. When everything you’ve known is gone and you’re left with a broken heart, sometimes the greatest gift you can give the person you love, is to set them free. Humour and pathos collide in *I Want To Be Happy*, created by Nightsong (*Mr Red Light*, *Te Pō*, *The Worm*) and starring theatre greats Jennifer Ludlam and Joel Tobeck.

## ***TAHI New Zealand Festival of Solo Performance***

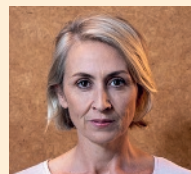
### ***Verbatim***

9–16 Sep | \$30 – \$55

Written by William Brandt

Devised by Miranda Harcourt and William Brandt

*Verbatim* premiered in 1993 and broke new and important ground. William Brandt and Miranda Harcourt presented an uncensored insight, with first hand accounts, into the impact of violent crime in Aotearoa. This work still strongly resonates today. With the expert skill of actor Renee Lyons we meet those interviewees.

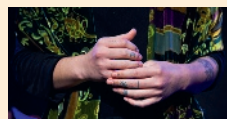


### ***ONO***

7–16 Sep | \$30 – \$35

Co-directed by Nicola Hyland (Te Atihaunui-a-Pāpārangī  
and Ngāti Hauti) & Sally Richards

*ONO* is a collection of six new monologues by Māori and Pasifika writers especially commissioned for TAHI New Zealand Festival of Solo Performance 2023. Six unique voices from Aotearoa. *ONO* follows the success of TAHI’s collection of monologues *Batch*, *Whānau* and *Joy*.



[www.circa.co.nz](http://www.circa.co.nz)





## CREATIVE NEIGHBOURS

*It is an exciting time for Circa Theatre and Te Papa as we build our cultural partnership on the Wellington waterfront.*

"We have much in common and, with our mutual talents, we can work together to make many opportunities for people to

come to the waterfront and enjoy exhibitions and live performances."



CAROLYN HENWOOD,  
CIRCA CO-FOUNDER  
& CIRCA COUNCIL MEMBER

## A TRUE ARTISTIC TREASURE

"Circa has become one of our true artistic treasures and is now a platform for artists from across the country to engage with

audiences. A place for Wellingtonians to see the best theatre our country has to offer."



ANDREW FOSTER,  
CIRCA COUNCIL  
CO-ORDINATOR

## A NIGHT OUT TO REMEMBER

"Circa's vision is to present our audiences with the best work from New Zealand and the world. This year we've got an incredible

breadth of programme and a range of voices that will entertain, challenge and inspire audiences."



SALESI LE'OTA,  
CIRCA COUNCIL

## WE LOVE WELLINGTON



"In our first 10 years, Circa staged over 20 plays by Wellington writers set in Wellington or relating to its people and places. We have continued this pattern and now in our programme you will always find a play by a Wellington writer with a story about Wellington and its people – their triumphs and tribulations."

SUSAN WILSON, DIRECTOR/CIRCA COUNCIL



### FUNCTION VENUE HIRE AT CIRCA THEATRE

For information about hosting your next function at Circa, please contact [circaadmin@circa.co.nz](mailto:circaadmin@circa.co.nz).



### BECOME A FRIEND OF CIRCA AND GET GREAT BENEFITS!

Express your love of the theatre by taking out a \$75 annual membership to our Friend of Circa programme. To join, simply visit [circa.co.nz](http://circa.co.nz) or phone our Box Office on 04 801 7992.



### CIRCA THEATRE RESTAURANT & BAR

Enjoy a fresh and seasonal blackboard menu with a selection of outstanding New Zealand wines at our fully licensed Café & Bar before or after any theatre show.

We need  
your help for

# THE GREAT CIRCA REBUILD



On the **waterfront**  
Circa Theatre takes centre stage

Support us here: [www.circa.co.nz](http://www.circa.co.nz)

Concept art: Inside Design



**CIRCA THEATRE**

04 801 7992 | [www.circa.co.nz](http://www.circa.co.nz)