

NZ's longest running political satire returns



A fast-paced, talent-packed political romp.

**29 Jul-26 Aug**

circa.co.nz | 04 801 7992

 **CIRCA**  
THEATRE

BY ARRANGEMENT WITH  
**PLAYMARKET**  
HE RŌPŪ TAUTOKO TĪTO  
WHAKAARI O AOTEAROA

# THEATRE ARTISTS CHARITABLE TRUST

**Circa Theatre** has been operating since 1976 and has gained a reputation as one of New Zealand's liveliest and most innovative theatres.

In 1987, Circa Theatre established the **Theatre Artists Charitable Trust (TACT)** to provide financial support to the creative artists (actors, playwrights, directors, etc) and help them achieve a viable income and career as professional artists. The support the artists receive from TACT through founding sponsor **Chapman Tripp**, as well as **Creative New Zealand**, and **individual donors** such as yourself, is vital to ensure we can continue to bring world-class theatre to Wellington.

## MAKE YOUR DONATION TODAY

Any donation, big or small, is greatly appreciated. Simply visit [circa.co.nz/support](http://circa.co.nz/support) to donate by credit or debit card.

Otherwise, make a payment through Internet Banking.

Account name: Theatre Artists Charitable Trust

Account number: 01-0505-0636362-00

Particulars: [Your name]

Payee code: [Your phone number]

Reference: Donation

Theatre Artists Charitable Trust is a charitable trust registered under the Charitable Trusts Act 1957 (registration number CC28898).

***Thank you for your support***

## PRINCIPAL SPONSORS



**Chapman Tripp** is proud to support New Zealand's vibrant and diverse arts community. Founding sponsor since 1987.



**Creative New Zealand** is the national arts development agency developing, investing in and advocating for the arts.

# CIRCA THEATRE

Circa Theatre staged its first production in April 1976 and in the succeeding years gained a reputation as one of New Zealand's liveliest and most innovative theatres. Circa also pioneered a collaborative system supporting creative artists who are the life-blood of our theatre. They emphasise the qualities of commitment and self-help which we greatly admire and which contribute to bringing our audiences professional theatre which is diverse and of the highest professional standard.

**Circa Theatre is administered by a working council comprising:**

Neville Carson, Debbie Fish, Andrew Foster, Carrie Green, Carolyn Henwood, Ross Jolly, Simon Leary, Salesi Le'ota, Jamie McCaskill, Gavin Rutherford, Linda Wilson, Susan Wilson.

In November 1994 Circa moved to its new premises at 1 Taranaki Street, Wellington, and in 2018 Circa completed its cafe/bar and foyer renovations for all patrons to enjoy.

**Theatre concept and design:** Grant Tilly

---

**Circa Theatre offers sincere thanks to the generous philanthropists and organisations who make it possible for us to continue to bring world class theatre to Wellington.**

---

**CORE FUNDERS**



Absolutely Positively  
Wellington City Council  
Me Heke Ki Pōneke

**MAJOR PARTNER**



**MAJOR GRANTS**



---

**Become a Circa Theatre Supporter**

All supporters play an important role at Circa Theatre and each gift makes a difference. For more information about becoming a Partner, donor or sponsoring a show at Circa Theatre, please contact our Philanthropy and Partnerships Manager at [partnership@circa.co.nz](mailto:partnership@circa.co.nz) or visit [circa.co.nz/support](http://circa.co.nz/support)

---

**Toi Uru Kahikatea (Arts Development) Investment Programme**

Circa Theatre is supported by Creative New Zealand's Toi Uru Kahikatea (Arts Development) Investment Programme. The programme provides annual or multi-year funding (up to three years) to established New Zealand artists, arts practitioners and arts groups and organisations, to support regular or continuous programmes of activity.

# PUBLIC SERVICE ANNOUNCEMENTS: ELECTION 2023

by Thom Adams, Johanna Cosgrove and Jamie McCaskill  
Winston's song written by Jamie McCaskill  
Created by James Nokise and Anya Tate-Manning

Director **Gavin Rutherford**  
Set and Costume Design **Daniel Williams**  
Light Design **Helen Todd**

## CAST

**Carrie Green** she/her | Ngāti Porou  
**Tom Knowles** he/him | Rongowhakaata  
**Simon Leary** he/him  
**Jamie McCaskill** he/him | Ngāti Tamaterā, Ngāti Rangī  
**Sepelini Mua'au** he/him | Levī Sāleimoa, Matāutu Falelatai  
**Anya Tate-Manning** she/her

## PRODUCTION

Producers **Anya Tate-Manning and Gavin Rutherford**  
Executive Producer **Carolyn Henwood**  
Stage Manager and Choreographer **Andrew Paterson**  
Assistant Light Design and Technical Manager **Isaac Kirkwood**  
Assistant Set Design and Production Manager **Lucas Neal**  
Sound Design **Oliver Devlin**  
Singing Arrangements **Tom Knowles**  
Technical Operator **Gabriella Eaton**  
Graphic Design **Jon Coddington**  
Publicity **Eleanor Strathern**  
Photography **Roc Torio**  
Sound Consultant **Tim Seconi**  
Set Construction **Joshua Boudreau**  
Directing Intern **Sam Lewis**  
Pack-in Crew (Set) **Nathan Arnott, Eden Winters, Anne-Lisa Noordover, Scott McCready, Alex Martyn**  
Pack-in Crew (Lighting) **Marcus Laurence**

## WRITERS' NOTES

Public Service Announcements is always a treasure. It attracts such brilliant people who care deeply about their art and the message they're delivering. Politics seems to attract the absurd, and that absurdity is compounded further by the realisation that the decisions these people make can be utterly devastating.

It has been a delight to be part of this writing team. Utterly unhinged and taking the script to places I wouldn't have dreamed. Viciously punching up with reckless abandon. They're honestly all so good. Thank you, you talented fucks.

Every election is the chance to improve the lives of the disenfranchised. So vote. Get your friends to vote. Vote for your community, for the people whose voices you can lift up.

**Thom Adams**

I really look forward to writing for PSA. As we move closer to the election it's always interesting to assess the current climate and how we can reflect on it using our current political landscape and political figures in a heightened and satirical fashion. I'd like to acknowledge Anya, Thom and Johanna for their experience and skill and for allowing me to write alongside them. Enjoy the fun.

**Jamie McCaskill**

Every time this show goes up, it feels slightly more urgent and unhinged - reflecting the vortex that is the shifting tides of our political landscape. Crawling out of Covid-19 lockdowns, facing increasingly devastating climate disasters, the dangerously regressive merging of church and state, the cost of living crisis - this election could not be more critical. As our politicians dance, scramble and juggle, so do our communities, and so do our artists. Joining the writer's table for a show with such a legacy has been a privilege. Having been one of the many Wellingtonian actors to cut their comedy teeth on PSA (at age 18, with a hectic mince pie gag), this full-circle moment feels vital on a personal level as well as a chance to reflect on the rich and eclectic history this show has collected. An opportunity to celebrate. A chance to open the audience's mouth with laughter and fill it with truth. A chance to punch up. A chance to remember that voting has never been more fucking essential. Send in the clowns.

**Johanna Cosgrove**

## CIRCA STAFF

FOH Manager	<b>Harish Purohit</b>	Box Office Manager	<b>Fay Van Der Meulen</b>
General Manager	<b>Caroline Armstrong</b>	Technical Manager	<b>Deb McGuire</b>
Administrator	<b>Georgia Davenport</b>	Accessibility Manager	<b>Kate Anderson</b>
Circa Marketing	<b>Shalesh Vasan and Anna Barker</b>		

## ACKNOWLEDGEMENTS

James Nokise, Chipmunks Playland Lyall Bay, Briar Wood, ADHD, Grouse Lighting, Paul Tozer, Victoria University of Wellington, Playmarket, Theatre Artists Charitable Trust, Circa Council.

Cast & Crew would like to acknowledge the Mana Whenua of Te Whanganui-a-Tara | Ngāti Toa, Te Atiawa, and Taranaki Whānui



# WHAT'S ON AT CIRCA

## *The Sun and the Wind*

28 Jul – 26 Aug | Circa Two | \$30 – \$55

By Tainui Tukiwaho

Presented by Taurima Vibes

Proudly supported by Shoreline Partners



In the midst of a birthday celebration, Rangī and Hūkerikeri are caught off guard when two unexpected guests crash through the door intent on robbing the couple. But things don't go as planned when the older couple mistake the would-be thieves for their deceased son and his wife. Come with us as we explore the dangers of love and secrets. Of loving someone too much, not enough and being starved of it.

## *I Want To Be Happy*

7–30 Sep | \$30–\$55

By Carl Bland

Starring Jennifer Ludlam

Directed by Ben Crowder & Carl Bland

Script development support provided by Auckland Theatre Company



Binka is a guinea pig in a laboratory cage. Paul is the lab assistant who looks after her. Neither understand each other yet everyday they share their hopes and fears. When everything you've known is gone and you're left with a broken heart, sometimes the greatest gift you can give the person you love, is to set them free. Humour and pathos collide in *I Want To Be Happy*, created by Nightsong (*Mr Red Light*, *Te Pō*, *The Worm*) and starring theatre greats Jennifer Ludlam and Joel Tobeck.

## *TAHI New Zealand Festival of Solo Performance*

### *Verbatim*

9–16 Sep | \$30 – \$55

Written by William Brandt

Devised by Miranda Harcourt and William Brandt

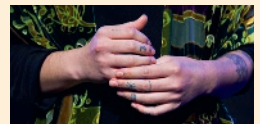


*Verbatim* premiered in 1993 and broke new and important ground. William Brandt and Miranda Harcourt presented an uncensored insight, with first hand accounts, into the impact of violent crime in Aotearoa. This work still strongly resonates today. We might ask what has changed? *Verbatim* is an opportunity to interrogate the lack of social change. With the expert skill of actor Renee Lyons we meet those interviewees.

### *ONO*

7–16 Sep | \$30 – \$35

Co-directed by Nicola Hyland (Te Atihaunui-a-Pāpārangi and Ngāti Hauti) & Sally Richards



ONO is a collection of six new monologues by Māori and Pasifika writers especially commissioned for TAHI New Zealand Festival of Solo Performance 2023. Six unique voices from Aotearoa. ONO follows the success of TAHI's collection of monologues *Batch*, *Whānau* and *Joy*.

[www.circa.co.nz](http://www.circa.co.nz)



## CREATIVE NEIGHBOURS

*It is an exciting time for Circa Theatre and Te Papa as we build our cultural partnership on the Wellington waterfront.*

"We have much in common and, with our mutual talents, we can work together to make many opportunities for people to come to the waterfront and enjoy exhibitions and live performances."



CAROLYN HENWOOD,  
CIRCA CO-FOUNDER  
& CIRCA COUNCIL MEMBER

## A TRUE ARTISTIC TREASURE

"Circa has become one of our true artistic treasures and is now a platform for artists from across the country to engage with audiences. A place for Wellingtonians to see the best theatre our country has to offer."



ANDREW FOSTER,  
CIRCA COUNCIL  
CO-ORDINATOR

## A NIGHT OUT TO REMEMBER

"Circa's vision is to present our audiences with the best work from New Zealand and the world. This year we've got an incredible breadth of programme and a range of voices that will entertain, challenge and inspire audiences."



SALESI LE'OTA,  
CIRCA COUNCIL

## WE LOVE WELLINGTON



"In our first 10 years, Circa staged over 20 plays by Wellington writers set in Wellington or relating to its people and places. We have continued this pattern and now in our programme you will always find a play by a Wellington writer with a story about Wellington and its people – their triumphs and tribulations."

SUSAN WILSON, DIRECTOR/CIRCA COUNCIL



### FUNCTION VENUE HIRE AT CIRCA THEATRE

For information about hosting your next function at Circa, please contact [circaadmin@circa.co.nz](mailto:circaadmin@circa.co.nz).



### BECOME A FRIEND OF CIRCA AND GET GREAT BENEFITS!

Express your love of the theatre by taking out a \$75 annual membership to our Friend of Circa programme. To join, simply visit [circa.co.nz](http://circa.co.nz) or phone our Box Office on 04 801 7992.



### CIRCA THEATRE RESTAURANT & BAR

Enjoy a fresh and seasonal blackboard menu with a selection of outstanding New Zealand wines at our fully licensed Café & Bar before or after any theatre show.



We need  
your help for

# THE GREAT CIRCA REBUILD



On the **waterfront**  
Circa Theatre takes centre stage

Support us here: [www.circa.co.nz](http://www.circa.co.nz)

Concept art: Inside Design



**CIRCA THEATRE**

04 801 7992 | [www.circa.co.nz](http://www.circa.co.nz)