

I Ken So Productions Presents

O Le
PEPELO,
Le
GAOI
MA
Le
PALA'AI

Co-written by
Natano Keni
& Sarita So

 **CIRCA**
THEATRE

KIA MAU
FESTIVAL

 creative nz
© Creative New Zealand 2014

14-17 JUNE | CIRCA ONE
circa.co.nz 04 801 7992



Director's Note

In contemplating names and titles, although my title is as director, this journey has truly been a collaborative process. This play is the culmination of my upbringing, shaped by the teachings of my parents and my experience as a Samoan born in Upper Hutt, Aotearoa, New Zealand. I, like many others, navigate multiple worlds.

To the Kia Mau Festival, thank you for believing in and inviting us to present our vision as part of this stellar Indigenous festival. Maiava Nathaniel Lees, your guidance and mentorship throughout this journey is immeasurable, fa'afetai tele lava. Tusi Tamasese, thank you for your guidance during the writing process.

Working within a Samoan/Pasifika company of this scale and range of experience is an unprecedented opportunity for me, to the cast I thank you for all your contributions throughout this process, I hope for the future that works like this will not be so far and few in between. To the dedicated production team, I am so grateful for the support provided behind the scenes. Likewise, I extend my sincere appreciation to all the visionary designers who have willingly embarked on this epic journey to breathe life into our story.

I am grateful to all for protecting the essence of the play, the Vā, ensuring it's upheld within the process. Each person on this journey has stepped in and stepped up to safeguard our message, this alone has been worth the journey.

This play is dedicated to those who have remained and those who have left the homeland.

Natano Keni

Ngā Mihi Nui ki a Koutou

**Kia Mau Festival &
Circa Theatre**

And to those who have assisted 'O le Pepelo, Le Gaoi Ma Le Pala'ai' on this journey:

Miria George, Hone Kouka, Tanya Muagututi'a, Ahi Karunaharan, Anya Tate-Manning, Taungaroa Emile, Toi Whakaari: NZ Drama School, The Hannah Playhouse, Avalon Studios, David Hamilton - Flash Dog Studio, Rowan Pierce, Matalena Leaupepe, John Ulu Va'a, Grace Hoet, Anapela Polataivao, Jo Randerson and the entire production and crew behind the Kia Mau Festival 2023.

Fa'afetai tele lava to Filia Keni and 22 Blueberry Grove for taking care of Beau-Wolf.

He Tāngata

NATANO KENI	WRITER, DIRECTOR
MAIAVA NATHANIEL LEES	DIRECTORS MENTOR
SARITA SO	PRODUCER, CO-WRITER
TUSI TAMASESE	SCRIPT ADVISER
MARK MCENTYRE	SET DESIGNER
TONY DE GOLDI	SET DESIGNER
EMI POGONI	SX DESIGNER
KARNAN SABA	SX DESIGNER
ISADORA LAO	LX, AV DESIGNER
CARA LOUISE	COSTUME DESIGNER
NICHOLAS BATEY	PRODUCTION MANAGER
SAMOANA NOKISE	STAGE MANAGER
TUPUA TIGAFUA	CHOREOGRAPHER
VILLA JUNIOR LEMANU	MOVEMENT DEVISER
SEMU FILIPO	FIGHT CHOREOGRAPHY
JOSIAH MATAGI	PRODUCTION INTERN
ROSE MILLER	POSTER DESIGN
MIKE CLARE	POSTER PHOTOGRAPHY

Cast

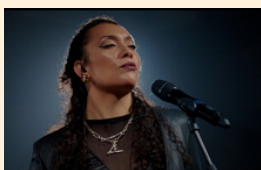
SEMU FILIPO
FIONA COLLINS
ALBERT LATAILAKEPA
TAOFI MOSE-NEHEMIA
MAUREA PEREZ-VAREA
BRETT TAEFU
JAKE ARONA
VILLA JUNIOR LEMANU
LANAKILA OPETAIA-TIATIA

CONTENT ADVISORIES: COARSE LANGUAGE

KIA MAU FESTIVAL

AT CIRCA THEATRE

www.circa.co.nz



AJA: Manawa Pao

Circa One | 2-3 June | \$25 - \$45

Kia Mau Festival will be opened by award winning musician, singer and songwriter, AJA.



Mokomoko

Circa Two | 6-10 June | \$20 - \$30

Written & Directed by Sherilee Kahui.



Waiwhakaata – Reflections in the Water

Circa One | 7 - 10 June | \$25 - \$45

Written by Niwa Milroy & Cian Parker & Directed by Eddie Elliott.



Flames: A Hip-hop Musical

Circa Two | 13 – 17 June | \$20 - \$30

By Roy Iro, Reon Bell and Sepelini Mua'au & Directed by Sepelini Mua'au.



O le Pepelo, Le Gaoi Ma Le Pala'ai – The Liar, the Thief and the Coward

Circa One | 15 - 17 June | \$25 - \$45

Co-Writer/Director: Ui Natano Keni (Samoan/Aotearoa); Co-Writer / Producer: Sarita Keo Kossamak So (Khmer/Aotearoa); I Ken So Productions